



SELVIN

# Nancy Selvin

SPARE AND LOOSELY STRUCTURED, THE BOTTLE FORMS created by Nancy Selvin recall canning jars arranged in glinting rows in the dim light of a pantry, or worn tools arrayed on the walls of a workshop. Selvin, who grew up in southern California in the 1950s, draws inspiration from the American West and from the old perfume bottles she excavated in empty lots as a girl. She works with a subtle, understated aesthetic to create pieces that have a sense of lyricism and a quiet nobility.

While Selvin's bottles inevitably evoke associations with the human form, they are just as important as vehicles of reflection on the long history of utilitarian objects fashioned in clay. Aligned in the airless space of memory like silent processions of witnesses to a distant past, her earthenware pieces evoke the pathos of aging through suggestions of cloudy rust stains, the grime of use, and the fading of color into a ghostly pallor. Her work hints at the familiar—bowls on a countertop, bottles on a ledge—and reexamines the spaces we inhabit. Selvin's work is in numerous public and private collections, including the Smithsonian American Art Museum in Washington, D.C., and the Los Angeles County Museum of Art.

Rubidoux | 2008 ▶

30 x 38 x 6 inches (76.2 x 96.5 x 15.2 cm)

Hand built, slab built, slip cast; underglaze brushwork, underglaze pencils, screen-printing; electric fired, cone 01

Photo by Kim Harrington



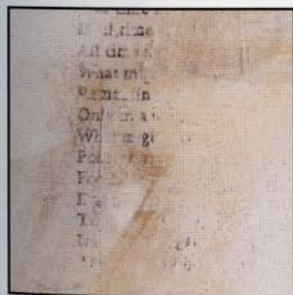


▲ Sandu | 2008

24 x 48 x 6 inches (61 x 121.9 x 15.2 cm)

Hand built, slab built, slip cast; underglaze brushwork, underglaze pencils, screen-printing, inlay bisque shards; electric fired, cone 01

Photo by Kim Harrington



▲ Rulo | 2007

24 x 48 x 6 inches (61 x 121.9 x 15.2 cm)

Hand built, slab built, slip cast; underglaze brushwork, underglaze pencils, screen-printing; electric fired, cone 01

Photos by Kim Harrington



◀ From the Studio | 2004

9 x 9 x 6 inches (22.9 x 22.9 x 15.2 cm)

Hand built, slab built; underglaze brushwork, underglaze pencils, screen-printing; electric fired, cone 01

Photo by Charles Frizzell

“ My ceramics serve as meditations on functional form.”

---



Rough White | 2003 ▶

24 x 28 x 6 inches (61 x 71.1 x 15.2 cm)

Hand built, slab built; underglaze brushwork, underglaze pencils; electric fired, cone 01

Photo by Charles Frizzell

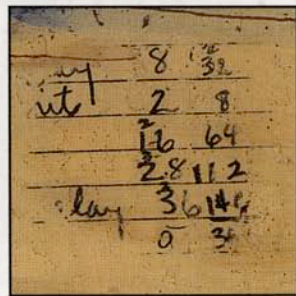


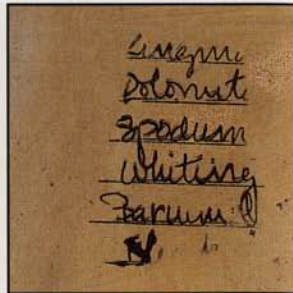
▲ Rough Suite | 2003

18 x 30 x 6 inches (45.7 x 76.2 x 15.2 cm)

Hand built, slab built; underglaze brushwork, underglaze pencils, screen-printing; electric fired, cone 01

Photos by Charles Frizzell



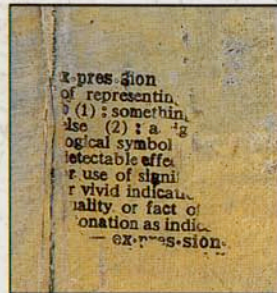


▲ Now: As Then | 2003

20 x 18 x 6 inches (50.8 x 45.7 x 15.2 cm)

Hand built, slab built; underglaze brushwork, underglaze pencils, screen-printing; electric fired, cone 01

Photos by Charles Frizzell



▲ Suite | 2002

18 x 30 x 6 inches (45.7 x 76.2 x 15.2 cm)

Hand built, slab built; underglaze brushwork, underglaze pencils, screen-printing; electric fired, cone 01

Photos by Charles Frizzell

“I am particularly indebted to the photographer Walker Evans, whose images capture abandonment and distill a spare and poetic vision of American life.”



▲ **Rough Red** | 2003

16 x 26 x 6 inches (40.6 x 66 x 15.2 cm)

Hand built, slab built; underglaze brushwork, underglaze pencils, screen-printing; electric fired, cone 01

Photo by Charles Frizzell

“ I use an iron-rich terra cotta to emphasize ‘clayness’ and to reference the historical role of the traditional clay body.”

---



◀ **Raku and Steel: Still Life** | 1997

50 x 15 x 15 inches (127 x 38.1 x 38.1 cm)  
Hand built, slab built; brushed and sprayed  
glaze; oxide wash, screen-printing, patina;  
raku fired, cone 08

Photos by Charles Frizzell